

DIPS

DIPS

Digital Ink Preset System

The growth of digital files in the prepress area has led to its use elsewhere in the printing process. Digital Ink Preset System (DIPS) from Printflow represents an extraordinary advancement in this area along with great potential savings in press makeready. DIPS provides a convenient means of rapidly setting ink fountains. Acting as a communicator between pre-press workstations and presses, DIPS calculates ink coverage information from pre-press data, converts it into ink key preset data and passes it to the press remote control console. This information enables the precise ink fountain presetting of a press. The result is less waste and a faster makeready.

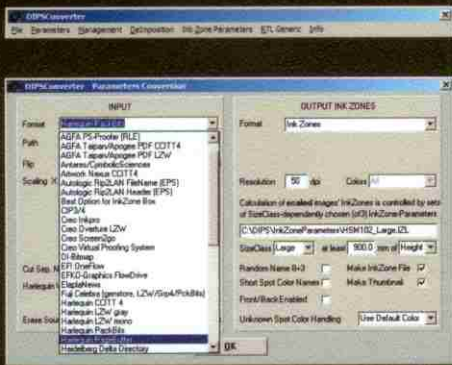
DIPS features

- the software package supports all common prepress technologies
- CIP3/4 supported but not required
- various press interfaces allow the communication with almost any modern press console
- one system for all of your presses, regardless of brands
- modular approach – an additional press interface can be added to support the new or additional press line
- preview of ready-to-print jobs
- printed jobs with previews are saved in PC for future reprints
- 1,200 installations worldwide

DIPS benefits

- less makeready
- waste saving
- more jobs per shift
- increase competitiveness
- one of the fastest ROI in the industry
- easy to integrate
- simple to use software interface





Digital Ink Preset System versions:

1. *DIPSo*ffline version
2. *DIPSo*nline version

DIPSo

ffline version

Printflow *DIPSo*ffline consists of *DIPS Converter* software (prepress file reader) and *DIPS Box* (press side module) with *Ink Preset Software*.

DIPS Converter

DIPS Converter digitally „scans“ pre-press files (reads almost any RIP format including CIP3) to obtain ink coverage data. The data is then passed to *DIPS Box* (PC Workstation) for further processing.

DIPS Box

DIPS Box with *Ink Preset Software* stores and processes ink coverage data generated by *DIPS Converter*. By acting as a storage device, *DIPS Box* allows jobs to be stored, used, recalled and moved at will. When the job is to be printed the ink coverage data is converted to ink key preset values and is transferred to the press console to preset the fountains. *DIPS Box* is very flexible and can support several press lines by using multiple press interfaces. The key zone information as well as the printing characteristics is calculated and stored for the press selected by an operator. Once a job has been run, it may be rerun on a different press if that is required by workflow considerations.

DIPSo

nline version

Printflow *DIPSo*nline version consists of *DIPS Converter*, a PC workstation with *Ink Preset Software* and an online Press Interface (*Connection to Press*).

PC Workstation with Ink Preset Software and online press interface

Ink Preset Software calculates ink preset data from ink coverage information obtained by *DIPS Converter*. Ink preset data can be selectively used to preset the press ink keys prior to makeready. *Ink Preset Software* allows jobs to be previewed, stored, recalled and moved at will. *Ink Preset Software* is installed in a PC Workstation that is situated next to the press console and networked with prepress room. The PC Workstation is connected online with a press console through the cable + USB/NET module with a special hardware. *Ink Preset Software* also includes an optimization feature. This feature allows pressman to optimize ink preset values from saved data. Good optimization results in a fast and accurate ink fountains preset.

Printflow DC

Printflow DC employs both the benefits of CIP3 compatibility (Digital Ink Preset System) and advanced closed-loop color management to ensure accurate and consistent color.